



# ACADEMY OF DESIGN

**ASSESSMENT:**  
***PIERROT***

CAROL D'SILVA



## BRIEF:

The brief consists of creating two looks with a total of four garments based on the theme of Pierrot. The fabrications of these garments should be made up of stable wovens or wovens with Lycra. The colour palette is based on the French National Flag; red, blue and white, including a variety of shades/tints from these colours. The designs must portray the Pierrot garment typology, silhouettes and details.





## INSPIRATION

The inspiration for this collection is taken from Pierrot, a stock character of pantomime and Commedia dell'Arte whose origins are in the late seventeenth-century that performed in Paris from Italy. Inspiration from the forecast of edgelands is also used to draw inspiration for the textiles and direction being used. Since Pierrot performed in Paris, the colour palette is linked to the colours of the French flag. Other details such as handmade lace done within the fabric along with a combination of stiff and soft fabric are used to create a sophisticated yet youthful look. This collection has hidden details that are revealed with movement of the body, like a clown performing unveils special surprises while performing tricks for entertainment.

## COLOUR & TEXTILE

The colours chosen and used are related to the French National Flag consisting of; red, blue and white. Black can also be used as it gives some garments an elegant timeless look. The colours the collection is designed around consisting of the shades and tints of blue and black such as; light baby blue, royal blue, black, grey and silver. This colour combination is made up of cool colours.

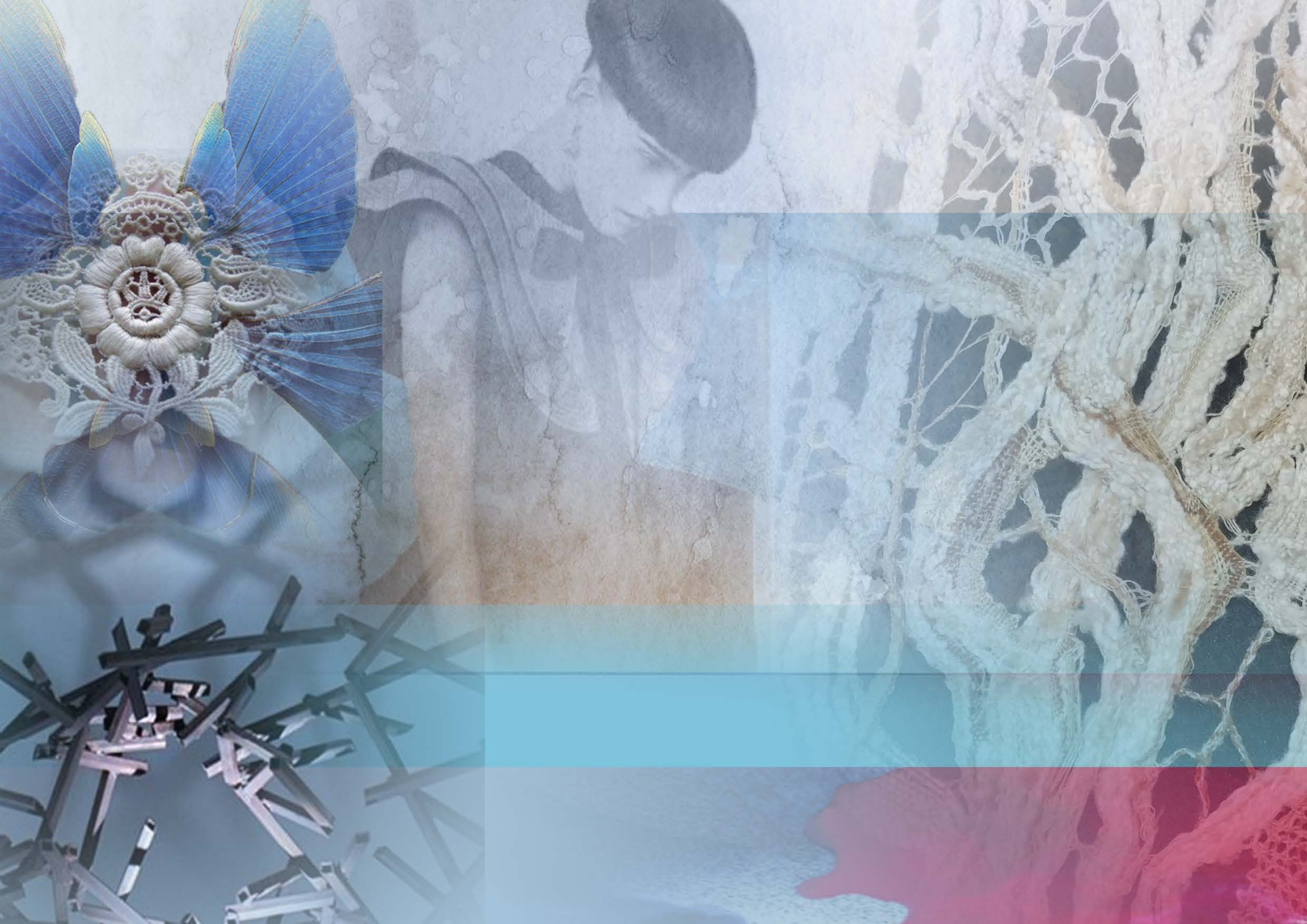
## SHAPE & DIRECTION

The shape and direction that are used in this collection are the fit and flare with ruffles and layers. These looks are to show-off the waist and give it a young elegant look. Lines are used to create some dramatic effects. The lace is used to provide the garments with a delicate feel and appearance.

## TARGET MARKET

This collection's targets women between the ages of 20-45years. This lady is sophisticated, hardworking and well off. She also enjoys taking time off for a glass of wine with the girls, picnic with the partner and going out for parties. This young lady loves to dress well and values a good piece of clothing. She enjoys being part of the lime light. These women are also very poor on time and would prefer to wear something easy to put on but needs to look sophisticated to portray her character and personality. She is an entrepreneur, celebrity and has done well for herself. She loves to go out and have a good time, also enjoys going away on spontaneous holidays around the world. She has a quirky side that is mostly hidden but revealed at the right time.



















# GARMENT 1

This is a sophisticated turtle neck top with three layers of the Peter Pan collar around the neckline. Each layer of the Peter Pan collar gets larger to provide as a main feature and focal point for this garment. The top is a fitting and sleeveless, making it a spring summer garment. The collar is made from light blue viscose heavy crepe, while the bodice is made from black fused poly. There is a full length opened black nylon zipper that runs along the back for easy put on and take off, this is taking into consideration the target market. There is a panel of the Tory Burch black and silver fabric along the front middle that has lace done within the fabric has a hidden feature/ detail.



## **SIZES:**

6, 8, 10, 12

## **FABRIC:**

- **Main:** Fused Poly
- **Lining:** 100% black Cotton
- Fusing
- **Collar:** Josh Goot - Viscose: Heavy Crepe
- Black nylon open ended zipper
- **Lace detail fabric:** Tory Burch - Cotton, Rayon and Poly

## **CARE:**

Warm - Cool water hand wash

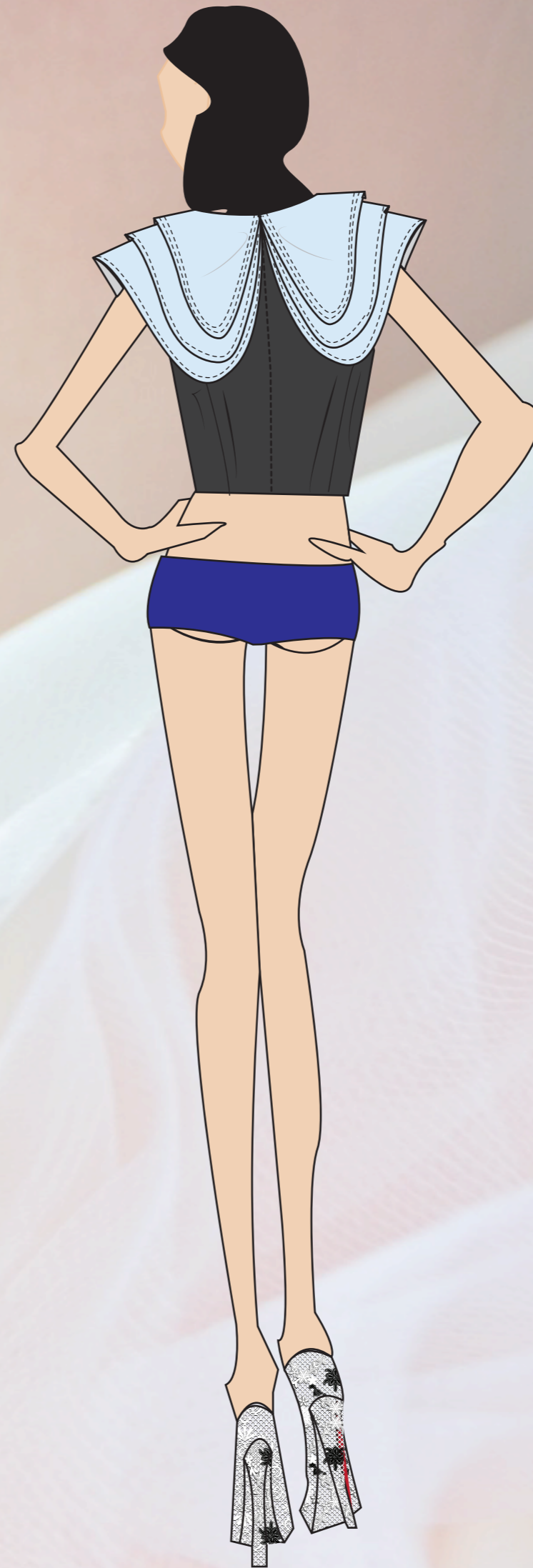
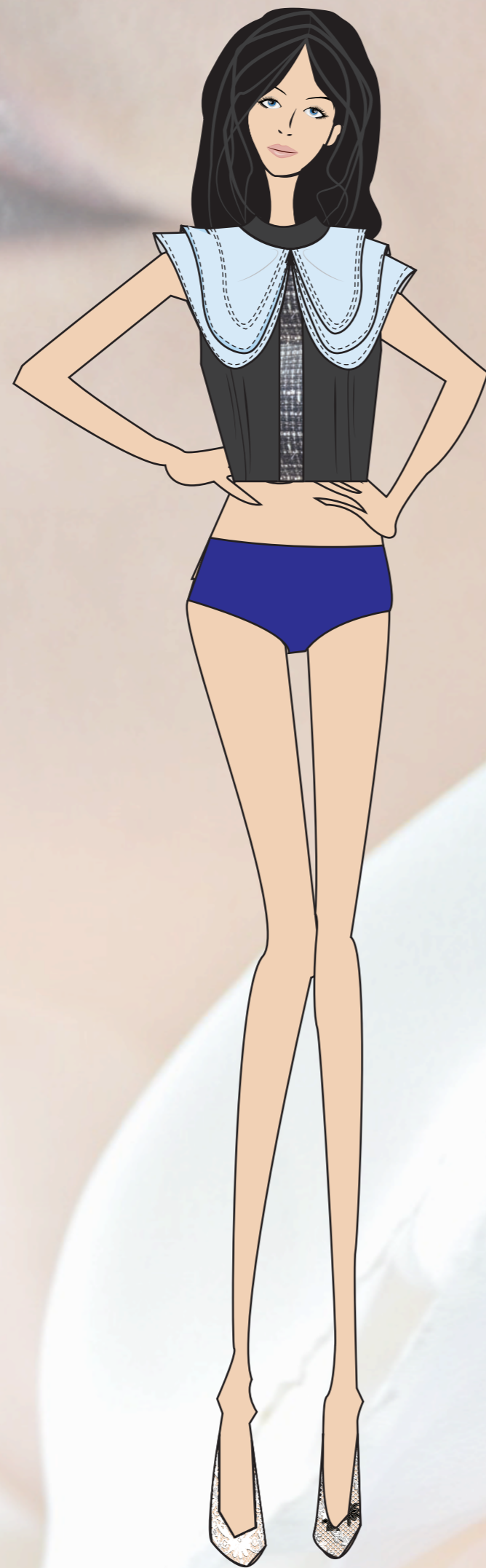
## **PRICE:**

W/S: \$-    Retail: \$-





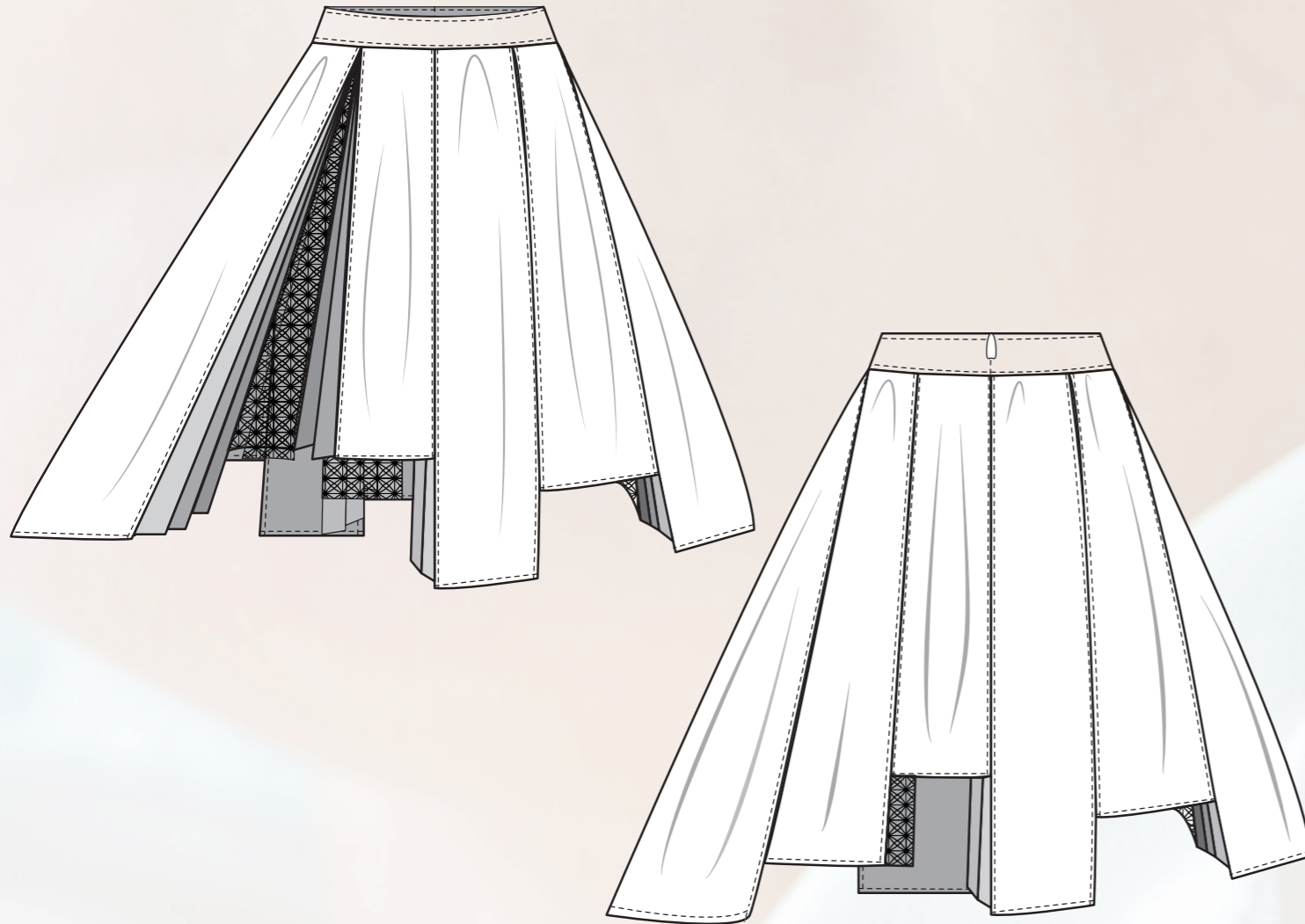
# GARMENT 1





## GARMENT 2

The multi-layered and paneled flare skirt is made up of a combination of three types of fabric; the outer most layer, the box pleat, is the multi-coloured Josh Goot stiff easy to work with fabric. The outer layer has its panels all at different levels giving it a modern look. The secondary layer of smaller box pleats inside the outer box pleats is the black fused poly. The final and last hidden detail that is revealed upon movement is the Tory Burch that is unraveled to embed lace into the fabric. The lace is hidden has not to overpower or clash with the outside multi-coloured layer and to also meld in with the inspiration used to designing this garment. An invisible black nylon zipper is placed at the back of this skirt.



### **SIZES:**

6, 8, 10, 12

### **FABRIC:**

- **Main top layer:** Josh Goot - Poly, Nylon, Acetate and Lurex
- **Lining:** 100% black Cotton
- Fusing
- **second pleated layer:** Fused Poly
- Black nylon invisible zipper
- **Lace detail fabric third layer:** Tory Burch - Cotton, Rayon and Poly

### **CARE:**

Warm - Cool water hand wash only

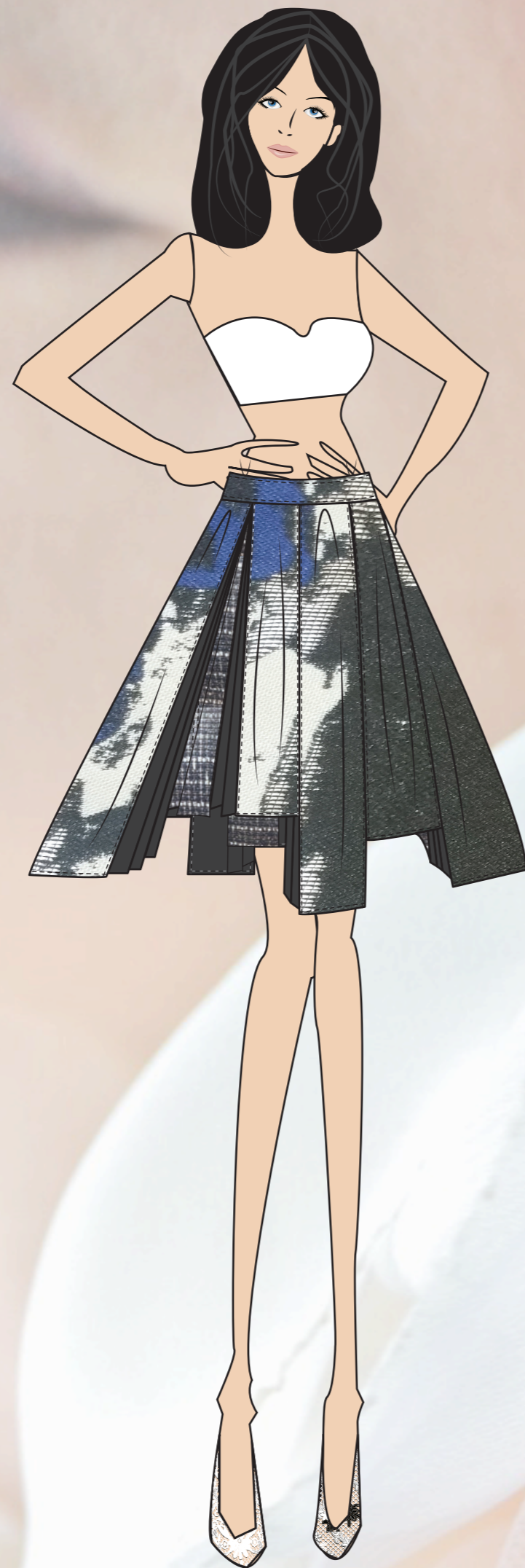
### **PRICE:**

W/S: \$-      Retail: \$-



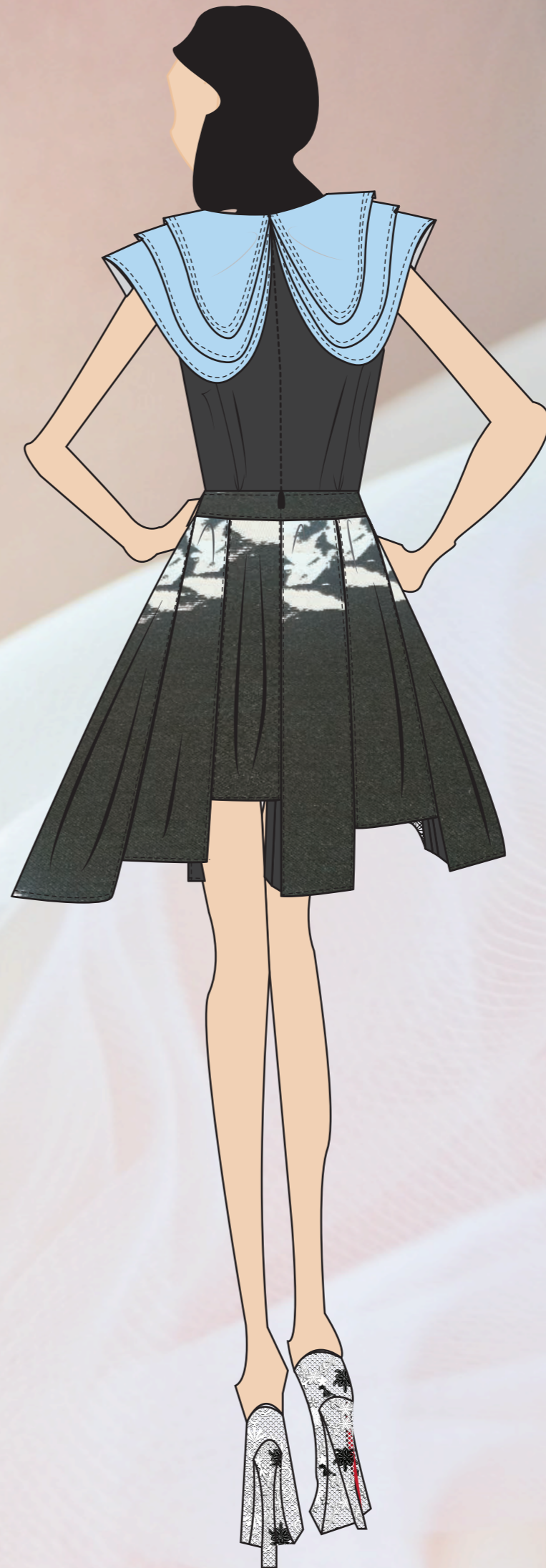
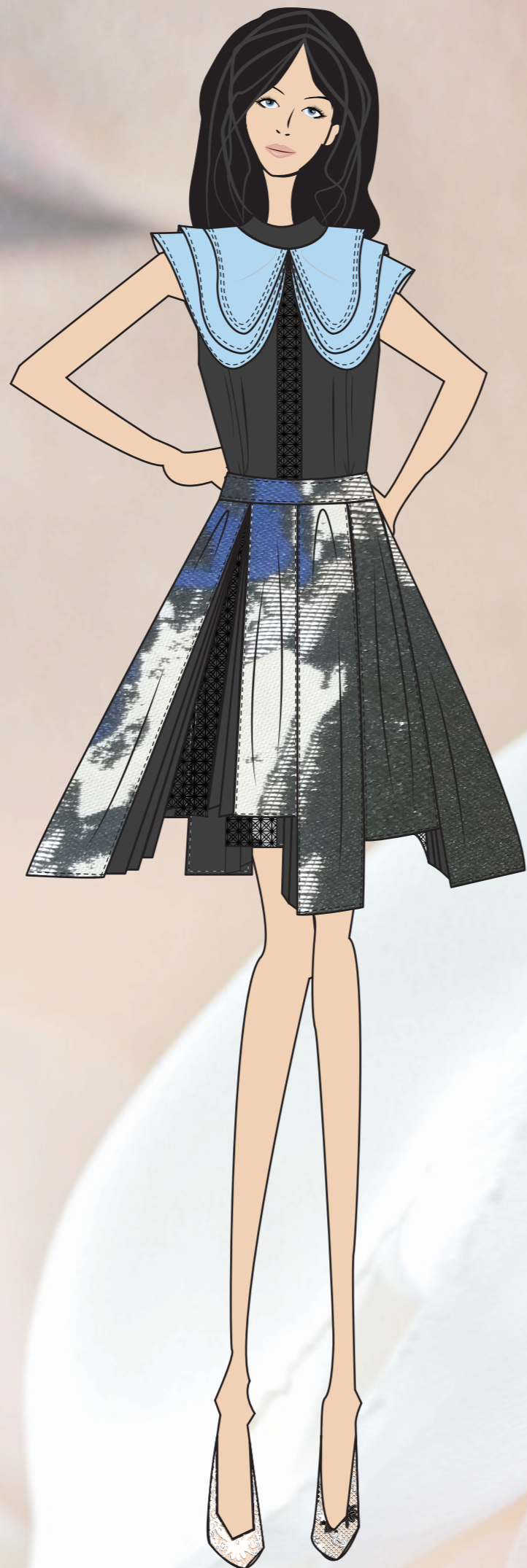


# GARMENT 2





LOOK 1





## GARMENT 3

This is a jacket dress made using three types of fabrics and textures. This garment is a beautiful fit and flare piece to show off a tiny waist line and also provides easy movement. The top ruffles in the front are made from the fused poly along with majority of the top bodice, and is lined with a black lining. The bottom flare section is designed to give it a young playful yet sophisticated classy appeal. A panel of lace made from the Josh Goot fabric is used in the center front to pull together the full garment. An invisible black nylon zipper is used at the back.

### **SIZES:**

6, 8, 10, 12

### **FABRIC:**

- **Main top:** Fused Poly
- **Lining:** 100% black Cotton
- Fusing
- **Flare Bottom:** Josh Goot - Poly, Nylon, Acetate and Lurex
- Black nylon invisible zipper
- **Lace detail fabric:** Tory Burch - Cotton, Rayon and Poly

### **CARE:**

- Warm/Cool water hand wash only

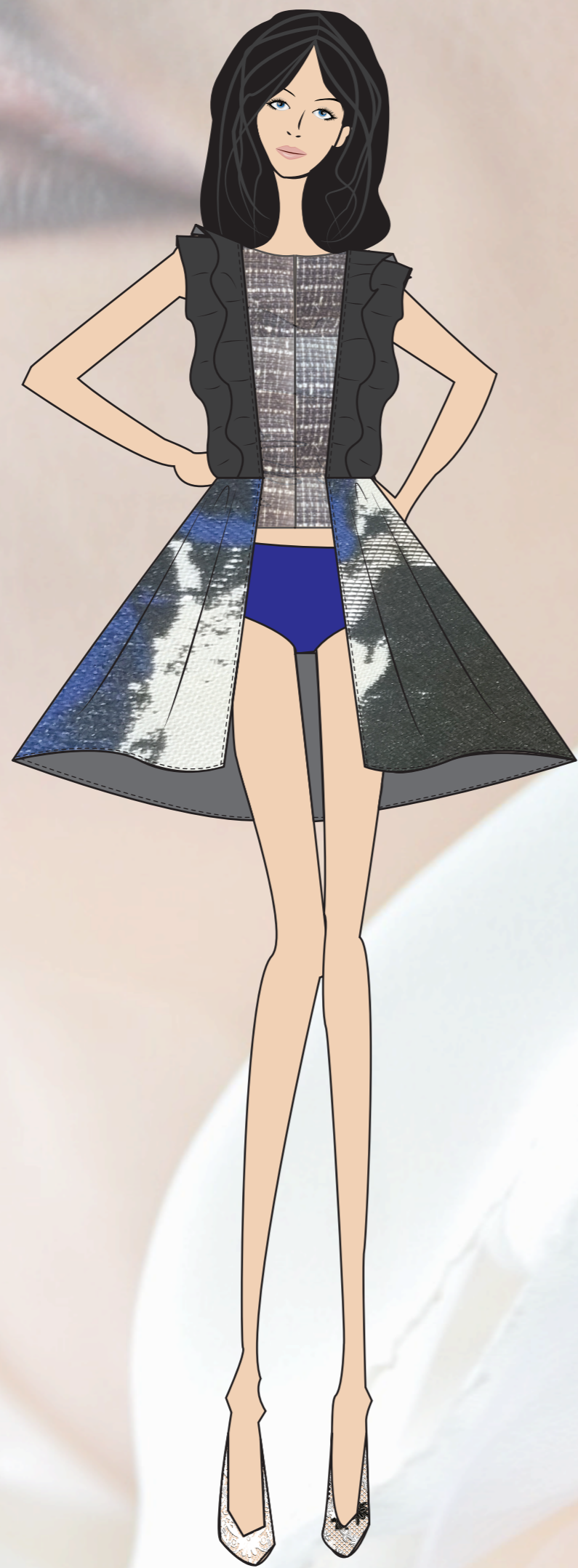
### **PRICE:**

W/S: \$-    Retail: \$-





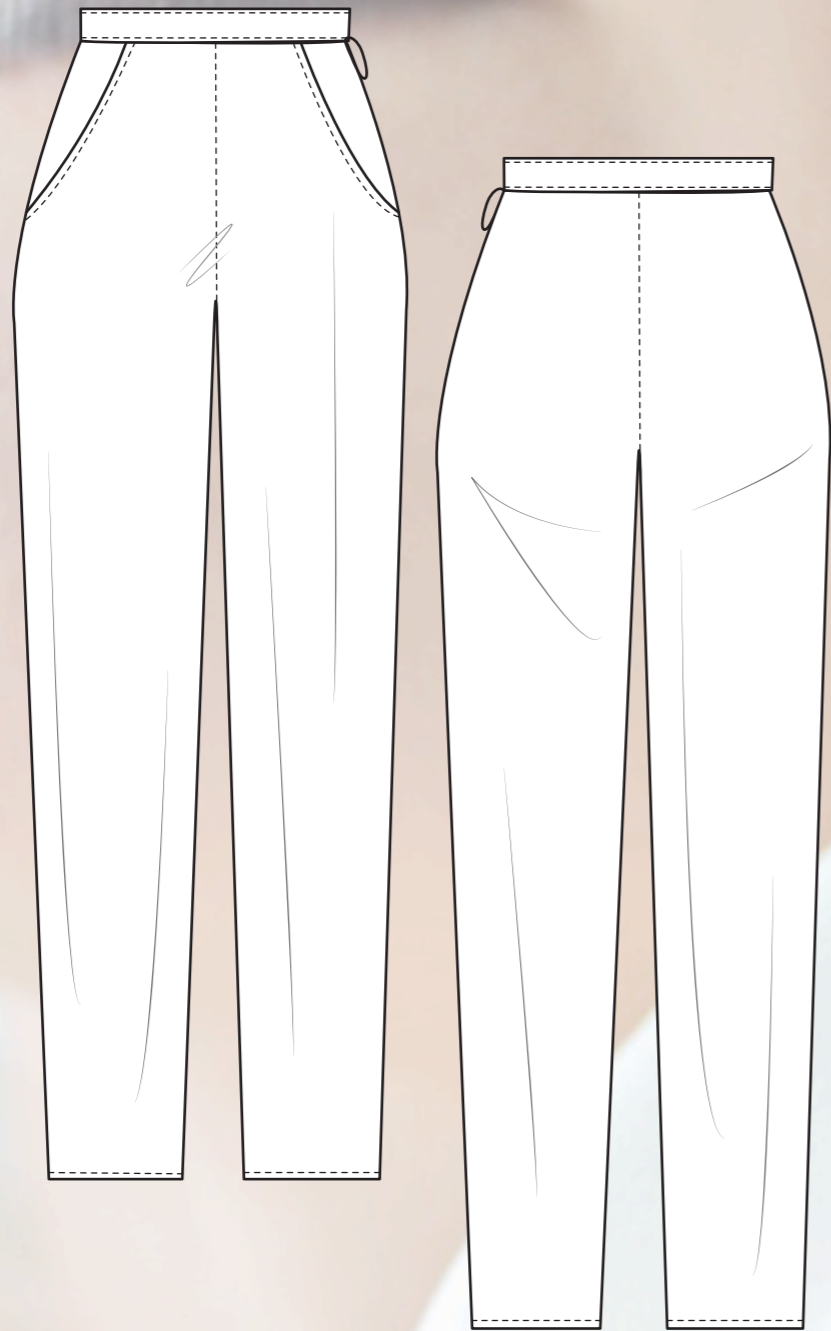
# GARMENT 3





## GARMENT 4

This elegant pair of capris pants is slim fitting. The material used is the black fused poly to join in with the other garments and looks in this collection. This pair is fairly simple and a casual everyday wear piece, a must have. It has two pockets located on the front sides. An invisible zipper is fitted to the left side of these pants.



### **SIZES:**

6, 8, 10, 12

### **FABRIC:**

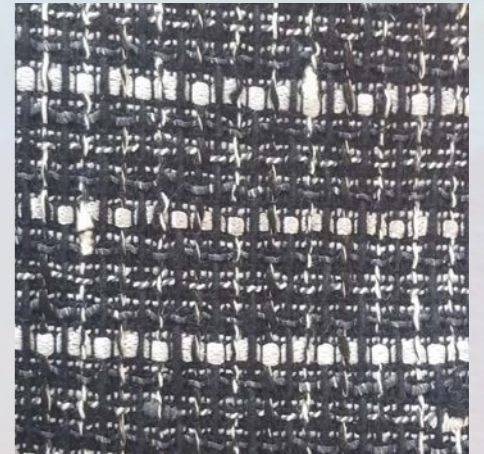
- **Main:** Fused Poly Black
- Fusing
- black nylon invisible zipper
- ployesterday black thread

### **CARE:**

- Warm/Cool water hand wash only

### **PRICE:**

W/S: \$-      Retail: \$-





# GARMENT 4





LOOK 2

