



ACADEMY OF DESIGN

ASSESSMENT:
ARCHITECTURE

CAROL D'SILVA

BRIEF:

The brief consists of creating two looks with a total of four garments based on architecture. The looks must consist of a minimum of 3 garments, where one needs to be a complex construction.



INSPIRATION

The inspiration for this collection is taken from the Monserrate palace in Sintra, Portugal. The design of the Monserrate was influenced by Romanticism and Mudejar Moorish Revival architecture with Neo-Gothic elements. The Islamic Architecture influence is in reference when the region was apart of the wider Muslim Gharb Al-Andalus until the 13th century. This influences can be seen from the outside dome shape and the marble along the entire hallways as well as the arches. These intricate marble craved arch ways are taken a inspiration for the looks for this architectural brief. This detail celebrates the character of this palace the most.

COLOUR & TEXTILE

The colours chosen and used are related to the colours inside the palace, especially taking the colours of the marble. The cream and beige colours along with gold to signify the rich royalty of this place.

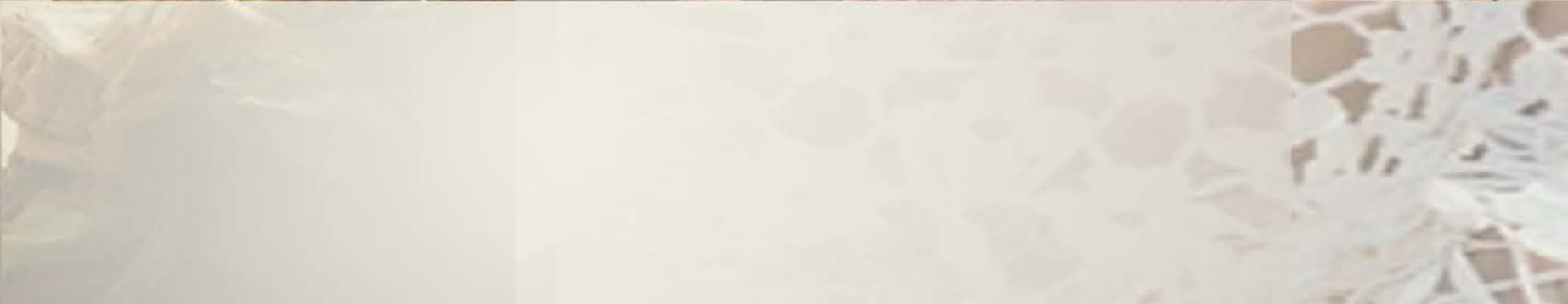
SHAPE & DIRECTION

The shape and direction that are used in this collection are the triangular shapes with the layering to show the layers of the marble along the arch way. The details within the walls of the craved marble is replicated with the use of intricate lace making techniques. This palace is simple but made up of complex designs and has been translated to the garments designed.

TARGET MARKET

This collection's targets women between the ages of 20-45 years. This lady is sophisticated, hardworking and well off. She also enjoys taking time off for a glass of wine with the girls, picnic with the partner and going out for parties. This young lady loves to dress well and values a good piece of clothing. These women are time constrained and would prefer to wear something easy to put on but needs to look sophisticated to portray her character and personality. She is an entrepreneur, celebrity is a high achiever. She loves to go out and have a good time, also enjoys going away on spontaneous holidays around the world. She has a quirky side that is mostly hidden but revealed at the right time. She loves to get spoilt occasionally.









GARMENT 1

This a complex and sophisticated layered dress to display the intricate work done within the the palace and to celebrates its wealth and beautiful architecture. The dress is created with multiple uneven layers, each one detailed with a different pattern of lace to the diversity of the different techniques used within the palace. The dress is to be loose fitting to eliminate any zippers or buttons but to be used as a slip dress.

SIZES:

6, 8, 10, 12,14

FABRIC:

- **Main:**
- **Lining:** 100% beige Cotton
- **Fusing**
- **Collar:**
- **Lace detail fabric:**

CARE:

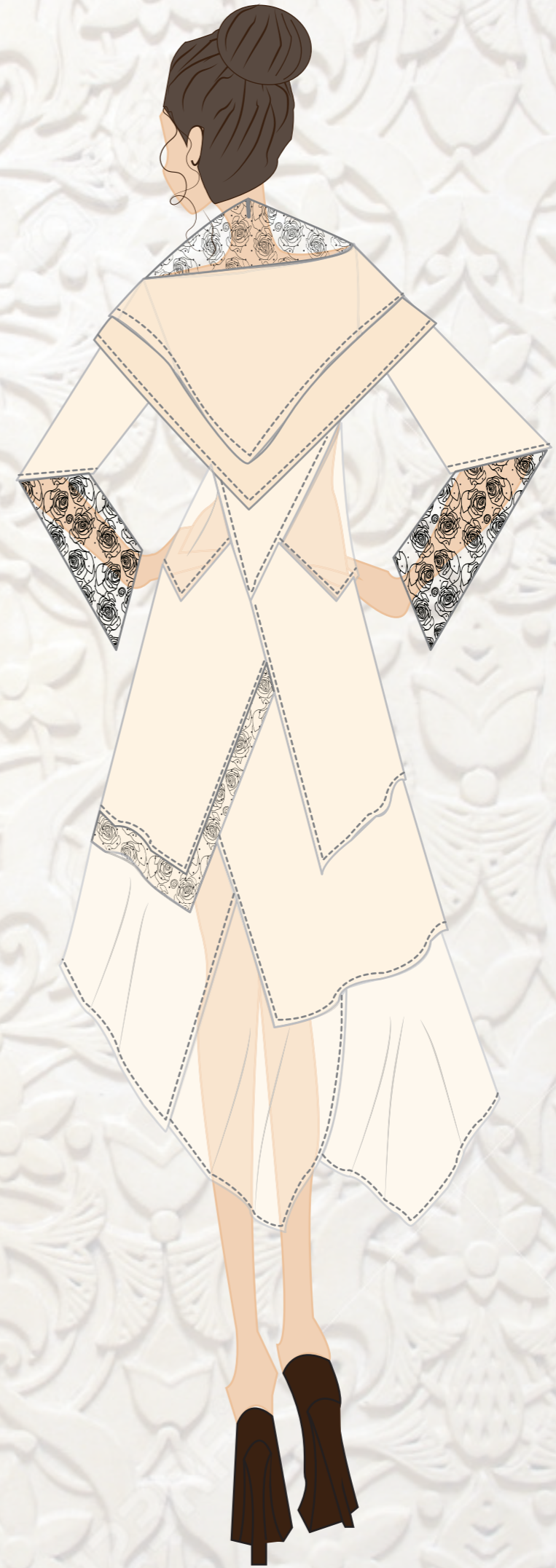
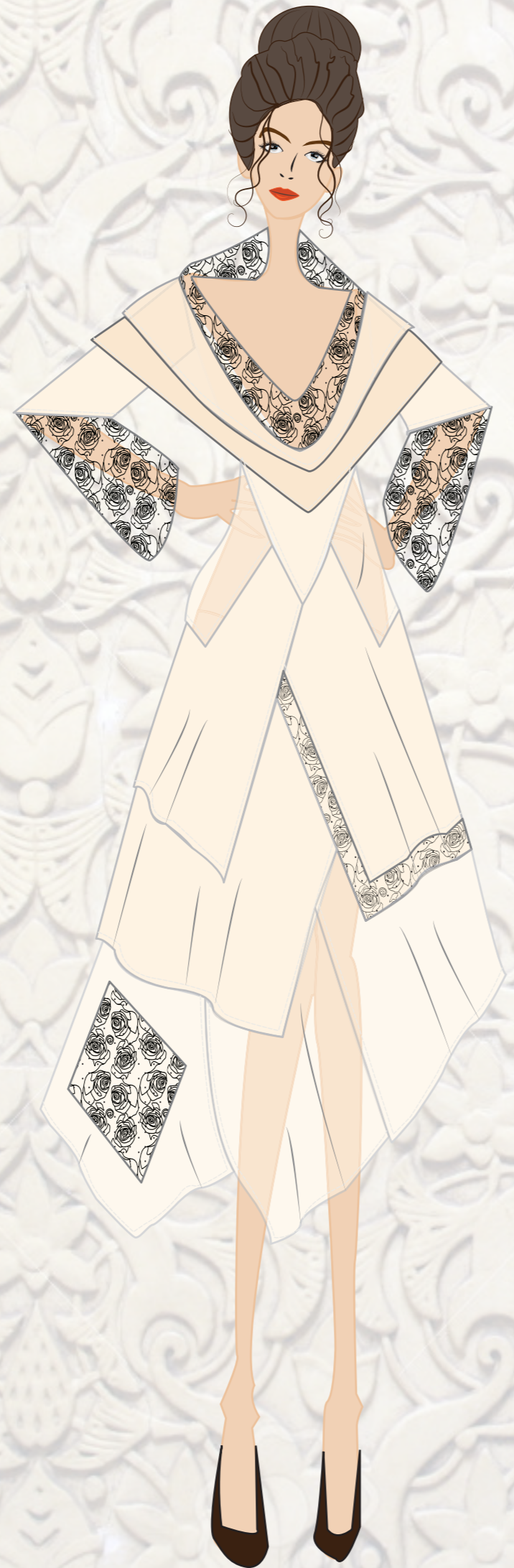
Warm - Cool water hand wash

PRICE:

W/S: \$- Retail: \$-



**GARMENT 1/
LOOK 1**



GARMENT 2

A simple top is designed using the colours of the marble from the palace along with the arch way marble details along the neckline. The loose fitting concept is using again to complement the other look.

SIZES:

6, 8, 10, 12, 14

FABRIC:

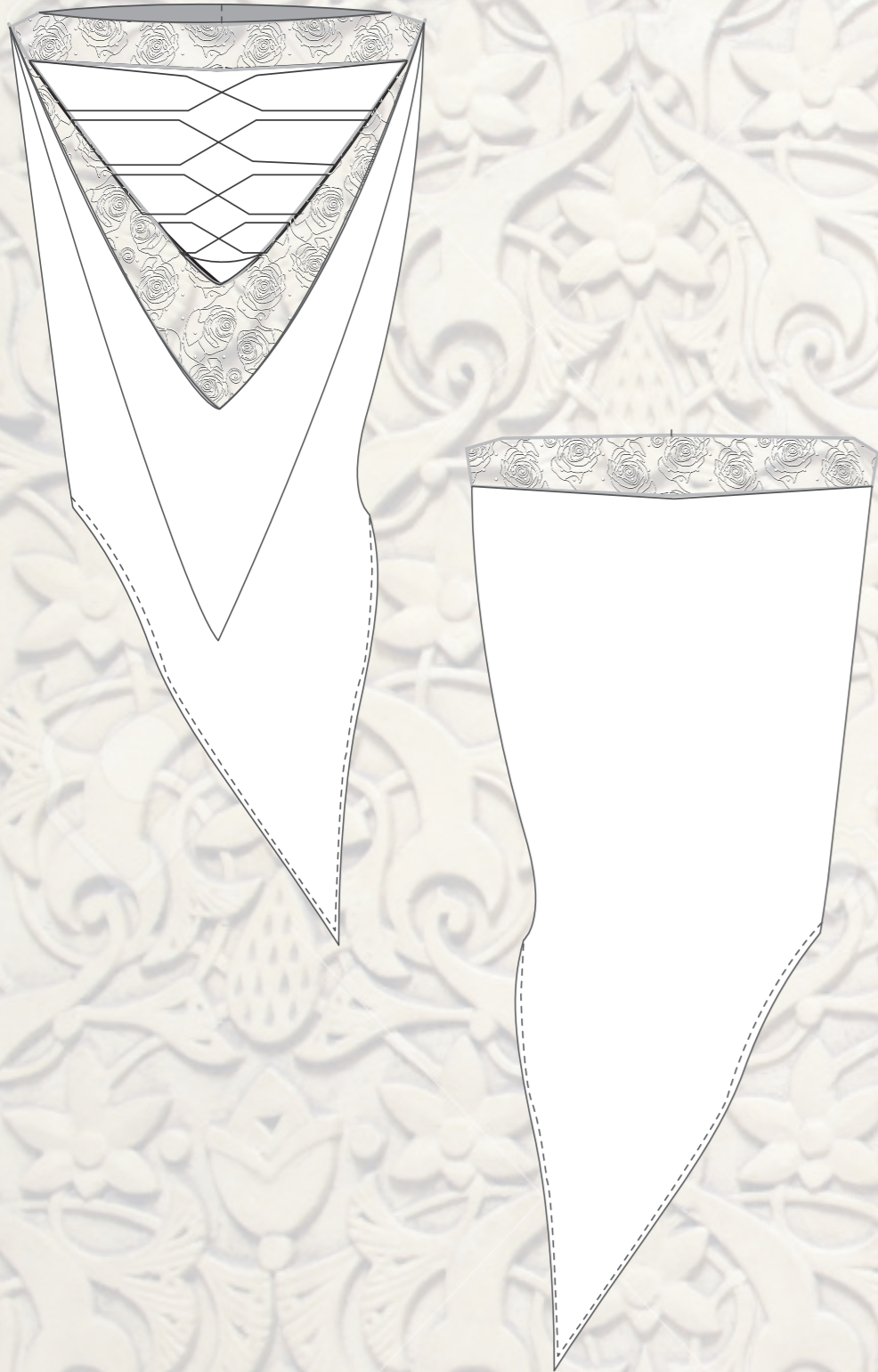
- **Main top:**
- **Lining:** 100% beige Cotton
- Fusing
- **Lace detail fabric:**

CARE:

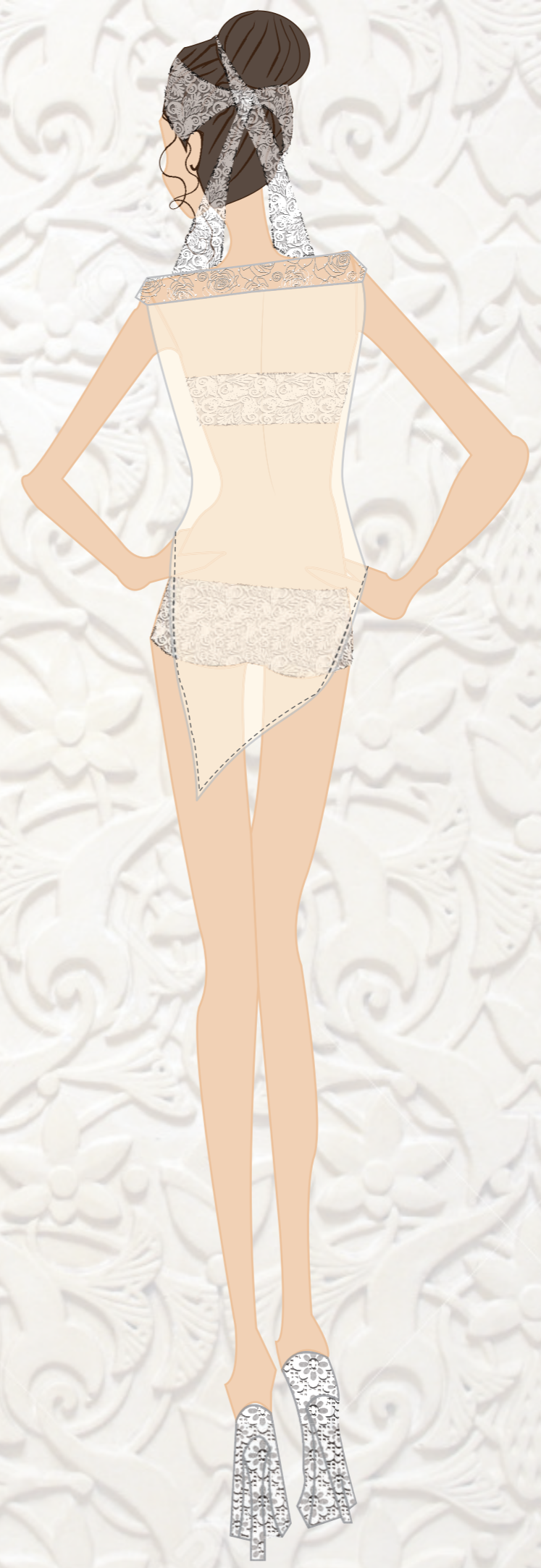
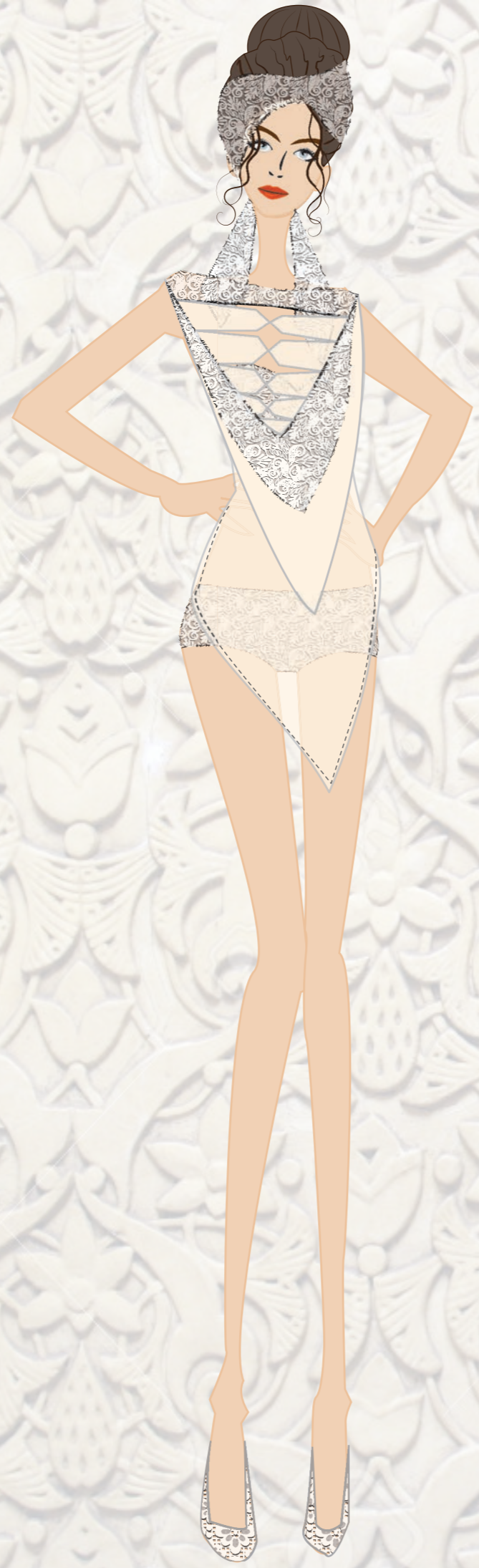
- Warm/Cool water hand wash only

PRICE:

W/S: \$- Retail: \$-



GARMENT 2



GARMENT 3

This elegant everyday wear skirt is designed with the same angles and detailing from the interior of the palace. The lacing along the one side to give it a slight asymmetrical look. The skirt is cut on a flair to provide a bit of character. The colours chosen are beige and creme along with iridescent thread for the lace detailing. An invisible zipper is located on the left hand side.

SIZES:

6, 8, 10, 12, 14

FABRIC:

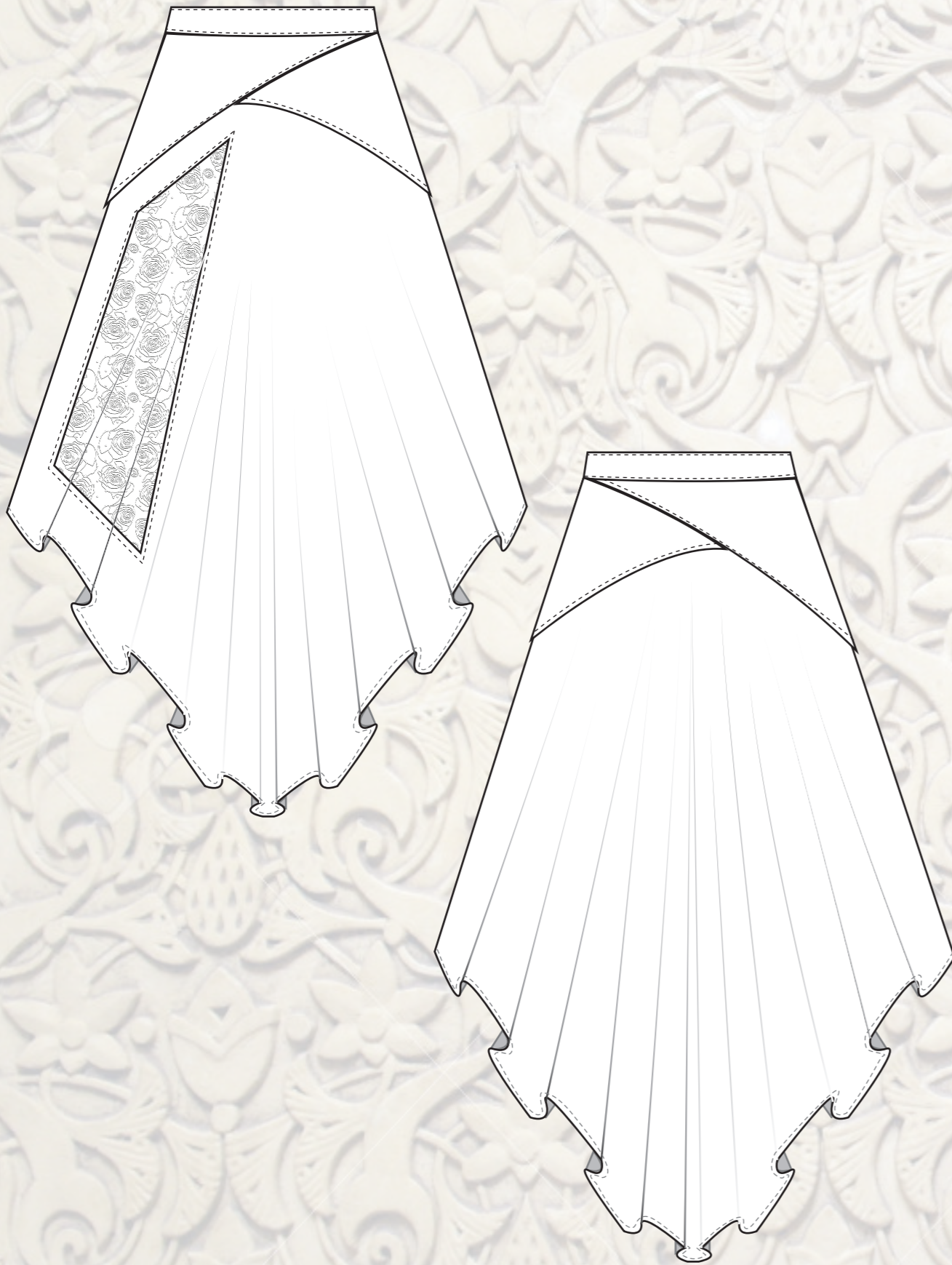
- Main:
- Fusing
- beige nylon invisible zipper
- ployesterday beige thread

CARE:

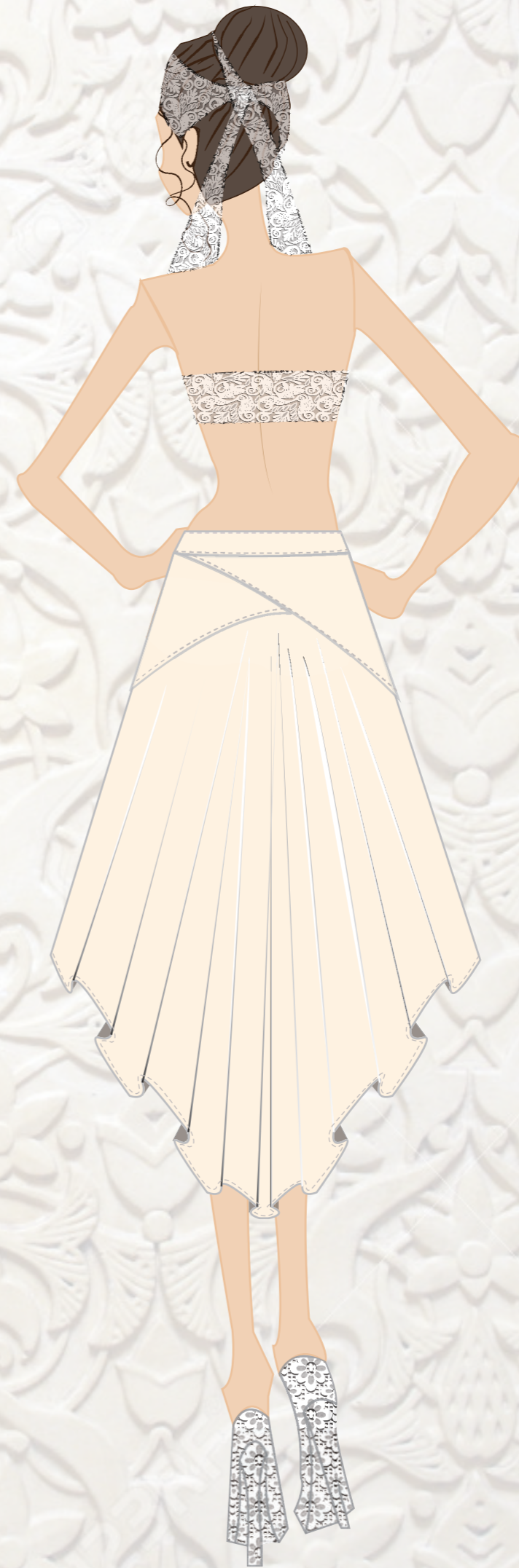
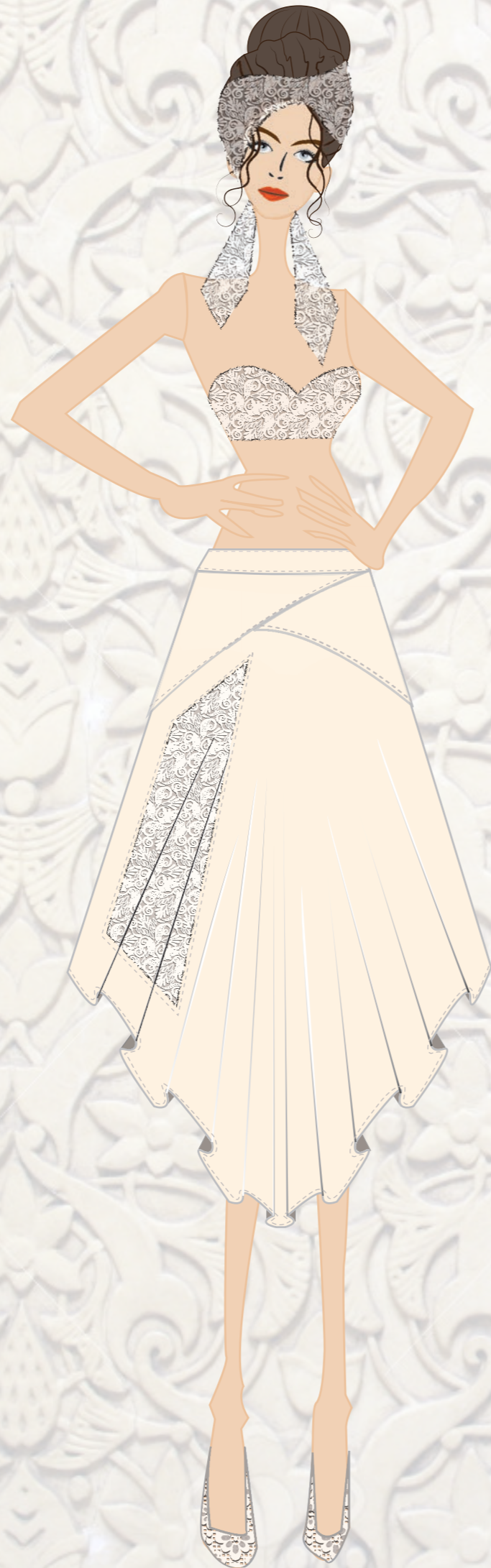
- Warm/Cool water hand wash only

PRICE:

W/S: \$- Retail: \$-



GARMENT 3



LOOK 2

